

LEGEND

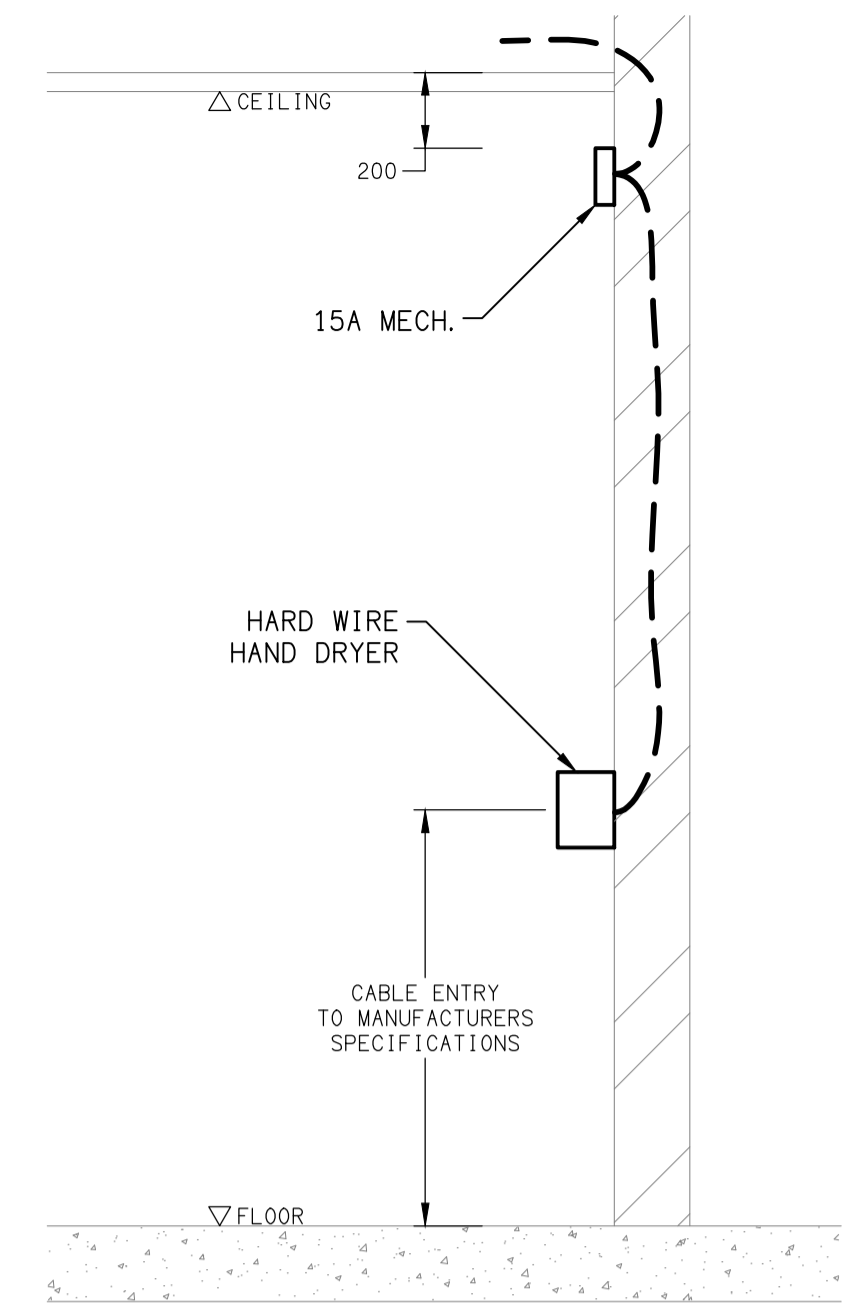
- ELECTRICAL SERVICES SWITCHBOARD.
- SWITCHBOARD BY OTHERS.
- SINGLE POWER OUTLET.
- DOUBLE POWER OUTLET.
- SPECIAL PURPOSE POWER OUTLET.
- SINGLE PHASE ISOLATOR.
- THREE PHASE ISOLATOR.
- INSITU POWER & COMMUNICATIONS TRAFFICABLE FLOOR BOX.
- SURFACE MOUNTED POWER & COMMUNICATIONS FLOOR BOX.
- ELECTRIC VEHICLE CHARGING STATION.
- HAND DRYER CONNECTION.
- CONDUIT ROUTE.
- LIGHTING PRESENCE DETECTOR SWITCH.
- LIGHTING CONTROL SWITCH PANEL, TYPE AS NOTED.
- ONE-WAY LIGHT SWITCH.
- TWO-WAY LIGHT SWITCH.
- CIRCUIT LINE.
- SWITCH LINE.
- POWER CIRCUIT DESIGNATION, DENOTES DB AND CIRCUIT.
- METER PANEL.
- SIGN CONNECTION.

LEGEND

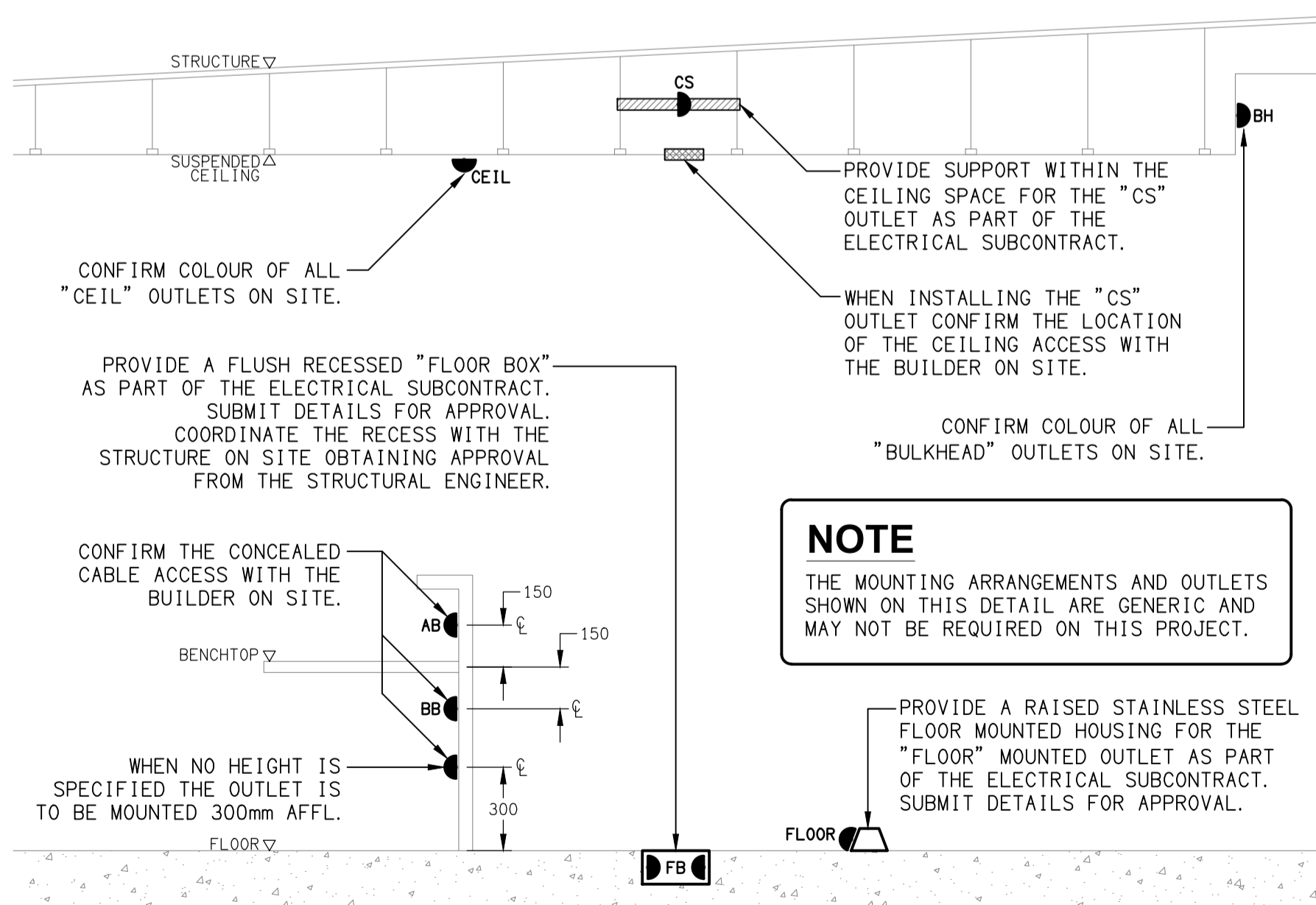
- LIGHTING CONTROL CHANNEL REFERENCE.
- MAIN DISTRIBUTION FRAME.
- ELECTRICAL EQUIPMENT AS NOTED.
- RJ45 COMMUNICATIONS OUTLET.
- FUSE.
- SINGLE PHASE.
- THREE PHASE.
- CURRENT TRANSFORMER C/W REMOVABLE LINK.
- FUSE LINK.
- COMBINED FUSE SWITCH.
- CIRCUIT BREAKER.
- ISOLATOR.
- RESIDUAL CURRENT DEVICE.
- CONTACTOR - NORMALLY OPEN.
- CONTACTOR - NORMALLY CLOSED.
- E1: GENERAL LED EMERGENCY LIGHT.
- EX: EMERGENCY LED EXIT LIGHT.
- Lx: LIGHT FITTING C/W NON-MAINTAINED EMERGENCY BATTERY PACK, TYPE AS NOTED.
- L1: 1200 LONG LED BATTEN C/W INTEGRAL SENSOR, SUSPEND / SURFACE MOUNT AS REQUIRED.

LEGEND

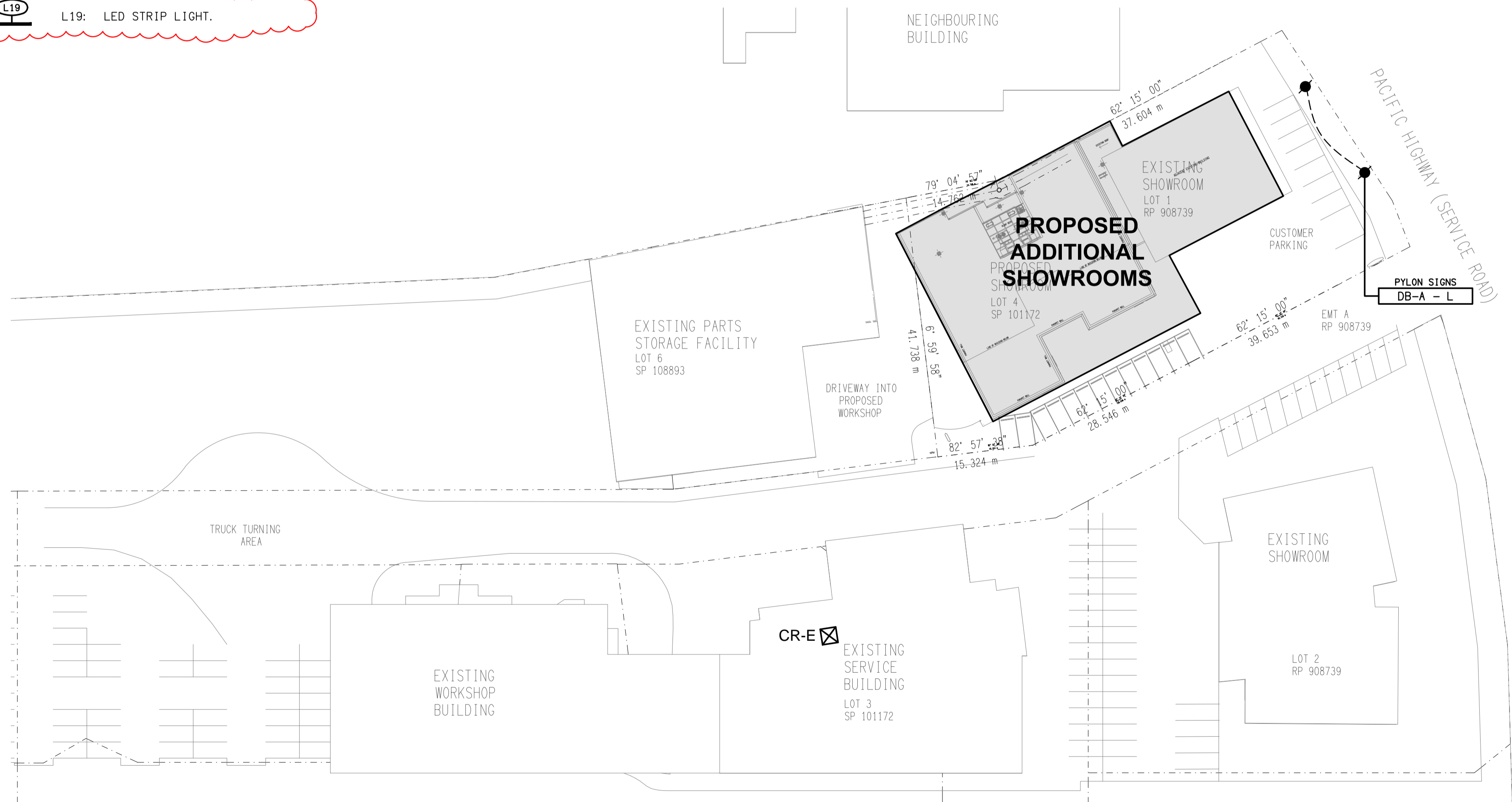
- L2: LED STRIP LIGHT MOUNTED UNDER OVERHEAD CUPBOARD.
- L3: 1200 x 300 SURFACE MOUNTED LED FLAT PLATE.
- L4: CIRCULATION RECESSED LED DOWNLIGHT.
- L5: LOUNGE RECESSED LED DOWNLIGHT.
- L6: RECEPTION RECESSED LED DOWNLIGHT.
- L7: ADJUSTABLE RECESSED TWO FITTING RECTANGULAR FITTING.
- L8: ADJUSTABLE RECESSED LED DOWNLIGHT.
- L9: LED WIDE BEAM LOW BAY FITTING.
- L10: LED WIDE BEAM HIGH BAY FITTING.
- L11: WALL MOUNTED LED SECURITY LIGHT.
- L12: AMENITY RECESSED LED DOWNLIGHT.
- L13: SURFACE MOUNTED WORKSHOP LED HIGH BAY.
- L14: 1200 LONG LED BATTEN C/W EMERGENCY PACK, SUSPEND / SURFACE MOUNT AS REQUIRED.
- L15: SURFACE MOUNTED LED STAIR BUNKER FITTING.
- L16: ADJUSTABLE RECESSED THREE FITTING RECTANGULAR FITTING.
- L17: WALL MOUNTED LED FLOOD LIGHT.
- L18: 600 LONG LED BATTEN C/W INTEGRAL SENSOR, SUSPEND / SURFACE MOUNT AS REQUIRED.
- L19: LED STRIP LIGHT.



DETAIL
HAND DRYER CONNECTION
NOT TO SCALE



DETAIL
TYPICAL OUTLET MOUNTINGS
NOT TO SCALE



SITE PLAN
PROPOSED ADDITIONAL SHOWROOMS
SCALE 1:500

ELECTRICAL DESIGN GROUP BRISBANE
PTY LTD
ACN 092 710 793
TRADING AS:
ELECTRICAL DESIGN GROUP

THE COPYRIGHT OF THIS DRAWING
REMAINS THE PROPERTY OF THE
ELECTRICAL DESIGN GROUP.
USE FIGURED DIMENSIONS
IN PREFERENCE TO SCALE.
ALL DIMENSIONS TO BE
VERIFIED ONSITE.

ELECTRICAL DESIGN GROUP
ELECTRICAL BUILDING SERVICES CONSULTANTS
BRISBANE GOLD COAST

P.O.Box 15, Sherwood Q.4075
Phone: (07) 3278 4375
Email: brisbane@edg.net.au
Web: www.edg.net.au

PROJECT:
**KEEMA SPRINGWOOD
ADDITIONAL SHOWROOMS**

3519 PACIFIC HIGHWAY, SLACKS CREEK

| | | |
|------|--------------|------------|
| G | CONSTRUCTION | 15/02/2024 |
| REV. | DESCRIPTION: | DATE: |

DRAWING:
**ELECTRICAL SERVICES
LEGEND & SITE PLAN**

SCALE:
1:500

AT A1

PROJECT NO:
C2857a

DRAWING NO:
E01

REVISION:
G